

# Nottingham Contemporary

## Learning Programme Highlights 2019



**In 2019, we celebrated our tenth birthday – in that time 300,000 people have taken part in learning activities with us – all for free.**

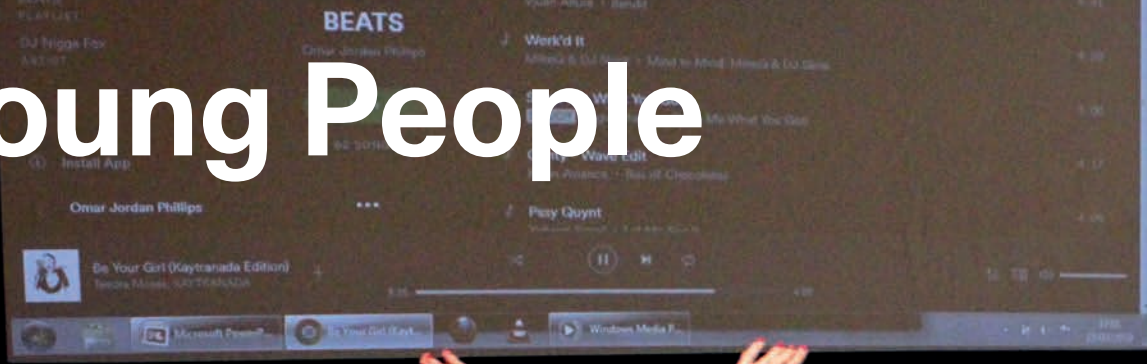


**Art Fund\_  
Museum of  
the Year 2019  
Shortlisted**

**Here are some  
highlights of a  
special year.**



# Young People





# Skills and experiences for young people

**3,000 young people have taken part in workshops, courses, events and projects – all for free.**

**Young people take part in vocational workshops and courses and we support them with careers advice and pathways into the arts.**

**They gain paid work experiences in ‘behind the scenes’ roles and lead events and discussions gaining critical thinking and public speaking skills. We commission young people with a strong reputation in their field to deliver courses and workshops for others.**

**“Being part of this group has boosted my growth and helped me know my worth as an artist.”**

**1525 Member - 1525 meet regularly to shape and help run our programmes.**



The Thomas Farr Charity

Garfield Weston  
FOUNDATION



# New opportunities for young people in 2019

We led a new work experience programme and connected 20 young people to cultural organisations and roles across the city. The group met and worked with technicians, curators, visitor services, learning and marketing teams.

**“I found a home with other like-minded people”**

Work Experience Week participant



We worked closely with young people at the Nottingham & Nottinghamshire Refugee Forum. Young people took part in creative workshops exploring the city and identity. In the summer they took part in ‘cook and draw’ sessions at the gallery.

**“It allowed us to give time and attention to those who may be especially vulnerable. We saw communication and integration improve, self esteem and aspirations raised and, perhaps most importantly, the burden of adulthood lessened..”**

Hannah Ziolek, NNRF





# Schools



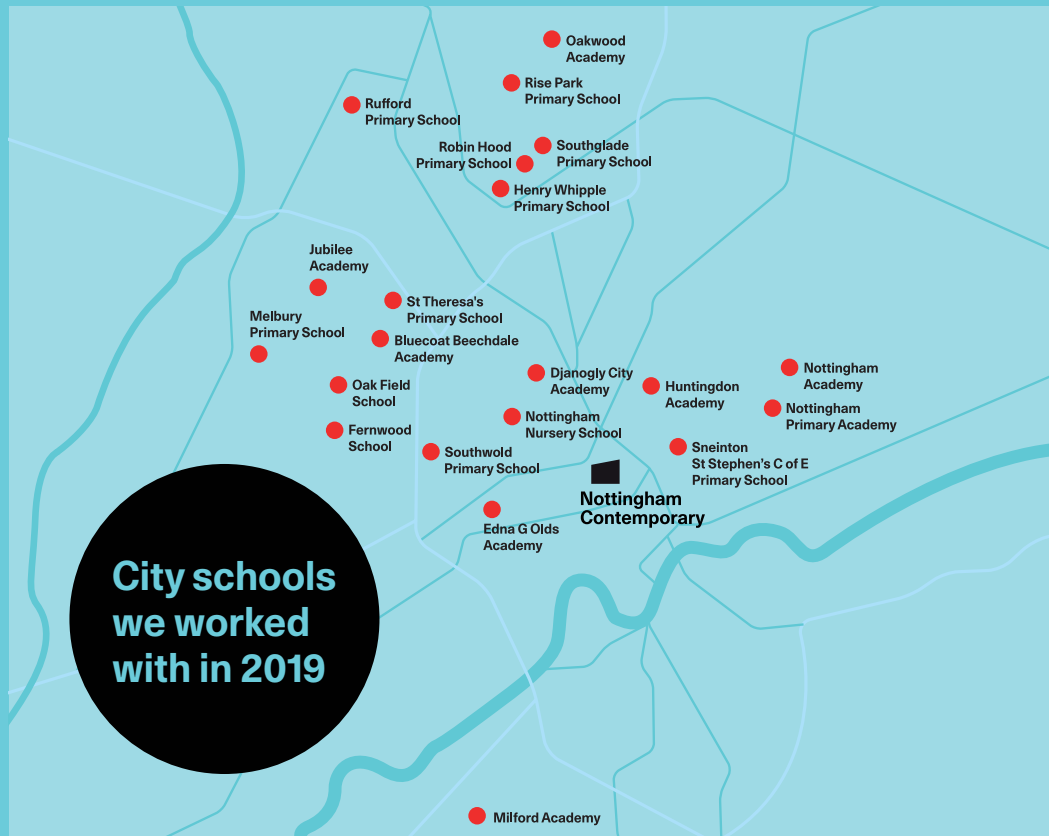


# Supporting learning skills and an arts-rich curriculum

We offer a dynamic programme of workshops with artists and free teaching resources and workshops for teachers.

- 3,500 pupils and teachers
- Over 2,000 college and university students

Our acclaimed Bauhaus exhibition celebrated arts education in Britain – over 50 school, college and university groups explored the show.





# Schools of Tomorrow

In 2019 we launched a new 3-year in-depth schools programme – Schools of Tomorrow to explore how artists and teachers can nurture and teach creativity.

Artists are resident in 8 city schools, working with pupils, families and teachers to develop unique creative projects that respond to school priorities.

**“*Schools of Tomorrow* represents a new model of museums working with schools. I’m really excited about what this collaborative programme will enable us to create and share with colleagues in the arts and in education.”**

**Sam Thorne,  
Director, Nottingham Contemporary**





# Families





# Supporting families to spend time learning and playing together

**16,000 family members took part in our free family workshops.**

**170 free, drop-in workshops at weekends and every day of the school holidays.**

**Over 5,500 family visitors in the summer.**

**Of these, 42% were from the City, 28% were from Black, Asian and Minority Ethnic backgrounds, 35% were first-time visitors and 55% of the children were early years.**





**“Love that it is accessible for lots of different ages. Like that there is a theme but it’s not descriptive - allows for kids to spark imagination and come up with their own ideas.”**

Family participant

**“Holidays can get expensive, so being free is a bonus! Fantastic ideas and lots of different spaces and activities.”**

Family participant





# Communities





# Working with communities

We support wellbeing and skills by working with partners to connect people to creative and social opportunities.

Some of our partners this year include:

**Alzheimer's Society**

**African Caribbean National Artistic Centre**

**Communities Inc.**

**Nottingham Recovery Network**

**Improving Lives**

**Radford Care Group**

**Spring Meadow Day Centre**





# Part of the city

**We worked with partners across the city on events, projects and campaigns.**

**In Sneinton we worked with the Renewal Trust to involve local people in shaping and making art where they live. Families worked with fashion and textile artists to create costumes and a performance.**

**We played a key role in Refugee Week celebrations and worked with Red Cross to mark the Day of the Disappeared.**

**For Autism Awareness Week we partnered with Autists Art Collective to create artworks and an exhibition.**

**Women worked with our artists to make banners for Reclaim the Night, working in partnership with the Women's Centre.**





# Loudspeaker - Creative projects for women

Our Loudspeaker programme supports women in difficult circumstances to develop confidences, make friends, learn new skills and feel motivated.

We supported 33 women and 4 of the women progressed on to peer mentoring, using their new-found confidence to support others.

**“The quality of the work and ideas that are delivered by the artists and supporting staff are amazing. The positive impact this safe place creates is priceless.”**

Navigator, Framework

Loudspeaker is part of the national Building Better Opportunities programme through the Opportunity and Change project which is funded by the European Social Fund and The National Lottery Community Fund.

**“Today I’m going home having done group work, and I’m feeling capable, confident, empowered, willing to take risks, and that’s what this does. Thank you for making me feel stronger, for making me feel more confident. Thank you for showing me that I’m worth being friends with, that I can do things, that my opinion is worth expressing and worth listening to.”**

Loudspeaker participant





# Thank you!

Thanks to all 25,000 participants who have taken part in our learning programmes in 2019.

Thanks to our principal funders  
Arts Council England  
Nottingham City Council

And to all our funders and colleagues who support our work - the trusts and foundations, universities, and partners from health, education, housing, community, youth, the voluntary sector and the arts.

We would love to work with you in 2020, please get in touch.

0115 9489750

[learn@nottinghamcontemporary.org](mailto:learn@nottinghamcontemporary.org)  
[www.nottinghamcontemporary.org](http://www.nottinghamcontemporary.org)

For this information in other formats please contact us



Supported using public funding by  
**ARTS COUNCIL  
ENGLAND**



**Nottingham  
City Council**