

Family Gallery Resource



Intro: SKETCH A DOODLE

"Looking through the sketchbooks, ideas drove Donald. He seemed to be searching for a language in which to say that. Look through the sketchbooks and you'll find everything you want to know about Donald."

Diane Symons, Donald Rodney's partner.



DONALD RODNEY
Visceral Canker

Family Gallery Resource



Activity: SKETCH A DOODLE

Take a look at Donald's sketchbooks in Gallery 3.

Donald kept sketchbooks all his life. Inside are a mixture of sketches, thoughts, found material, and designs for future artworks.

1. Choose a prompt card from the bag.
2. Respond to the prompt using the sketchbook and pencils provided.
3. When you have finished, place the prompt card back in the bag and choose another.
4. When you have completed all the prompts, please return all the materials to the bag ready for the next person to use.



Prompt Card

Sketch a section of your favourite piece of art in the exhibition.

Jot shapes, lines or textures to represent what you noticed and remembered.



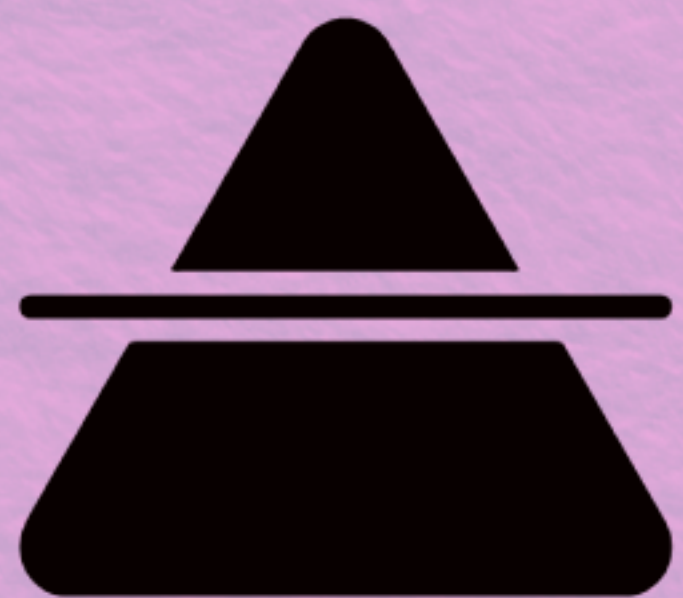
Prompt Card

Draw a favourite moment you can remember from memory.



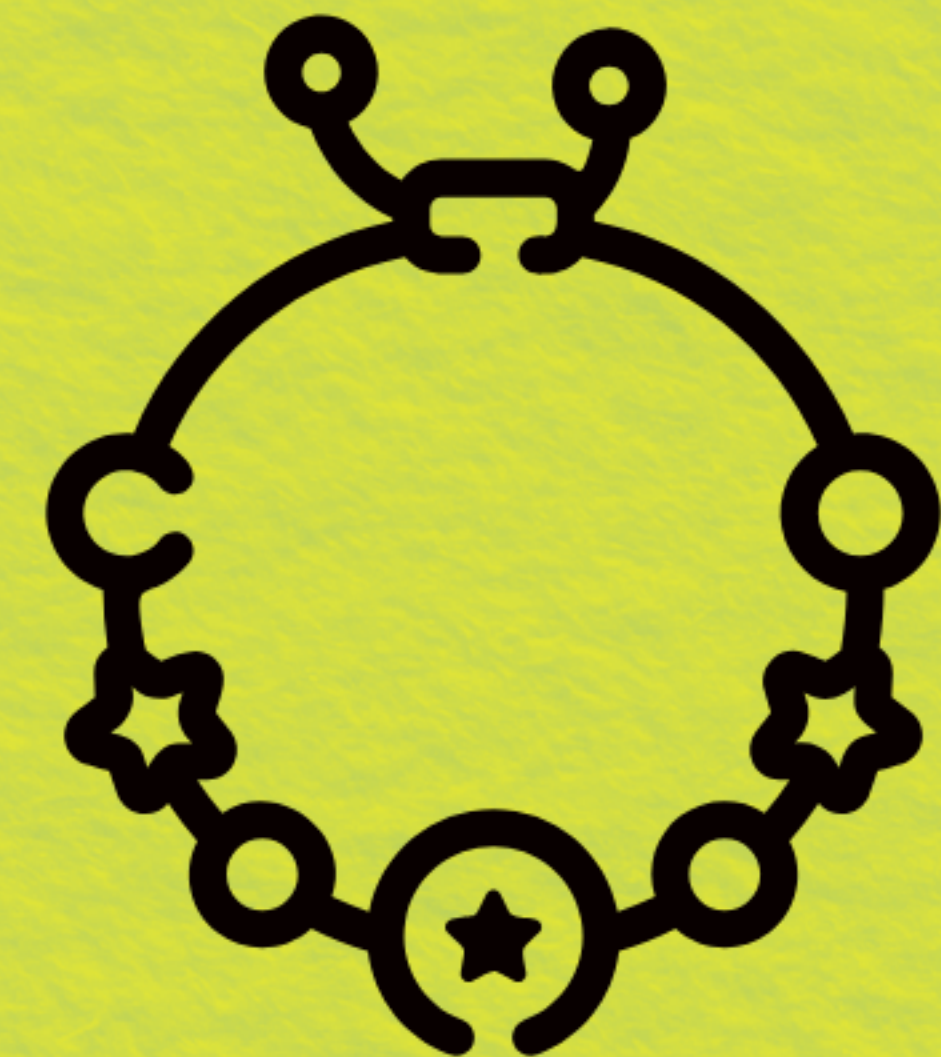
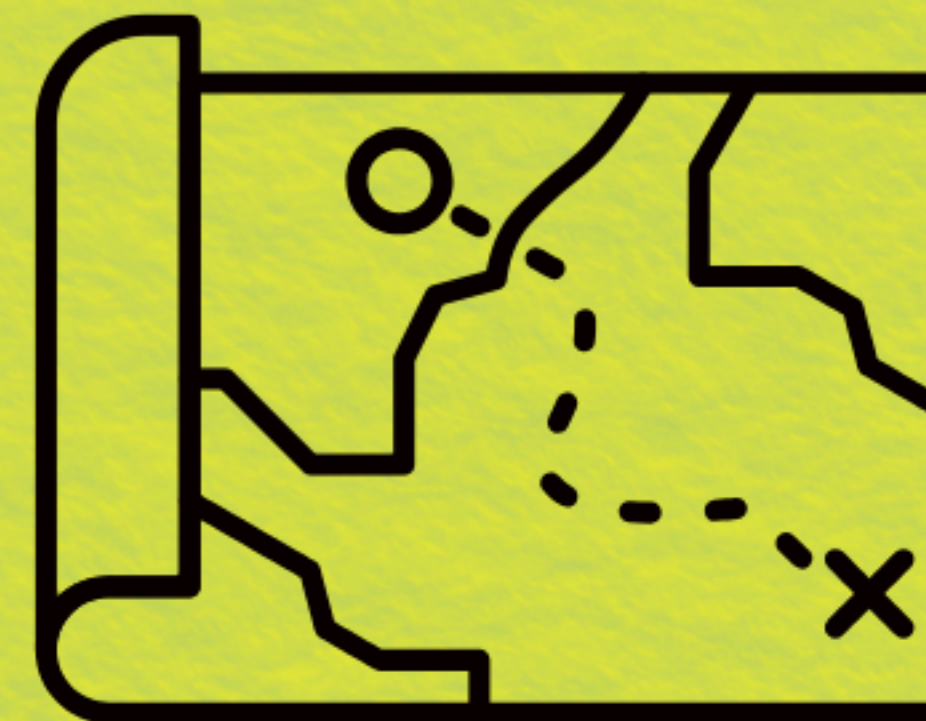
Prompt Card

Design a symbol that represents something you care about.



Prompt Card

Draw and describe an object you've lost, and still hope to find.



Prompt Card

Choose someone you have come with today and draw portraits of each other.



Prompt Card

Write a positive message to your future self.

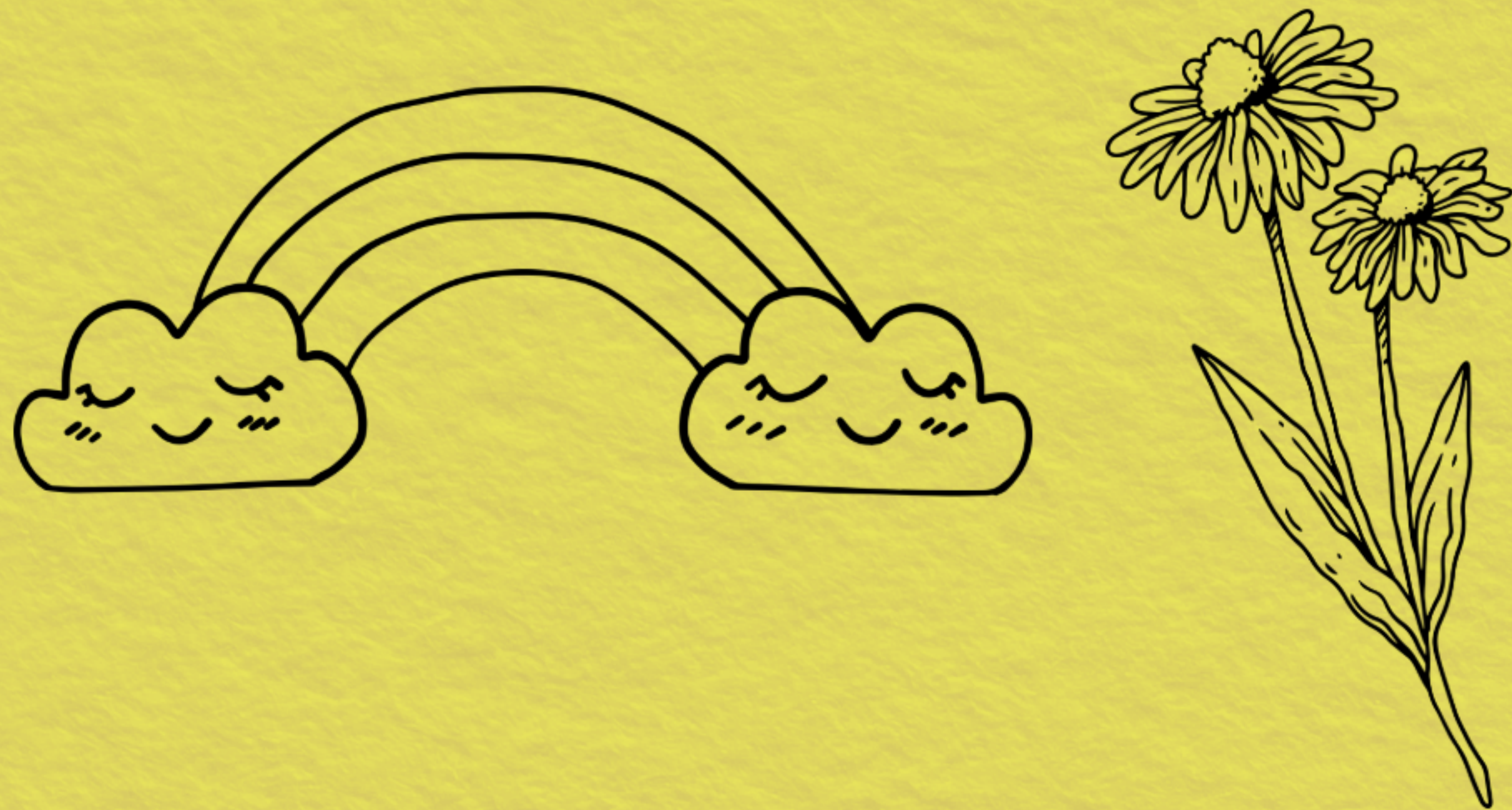
be proud

BRNO



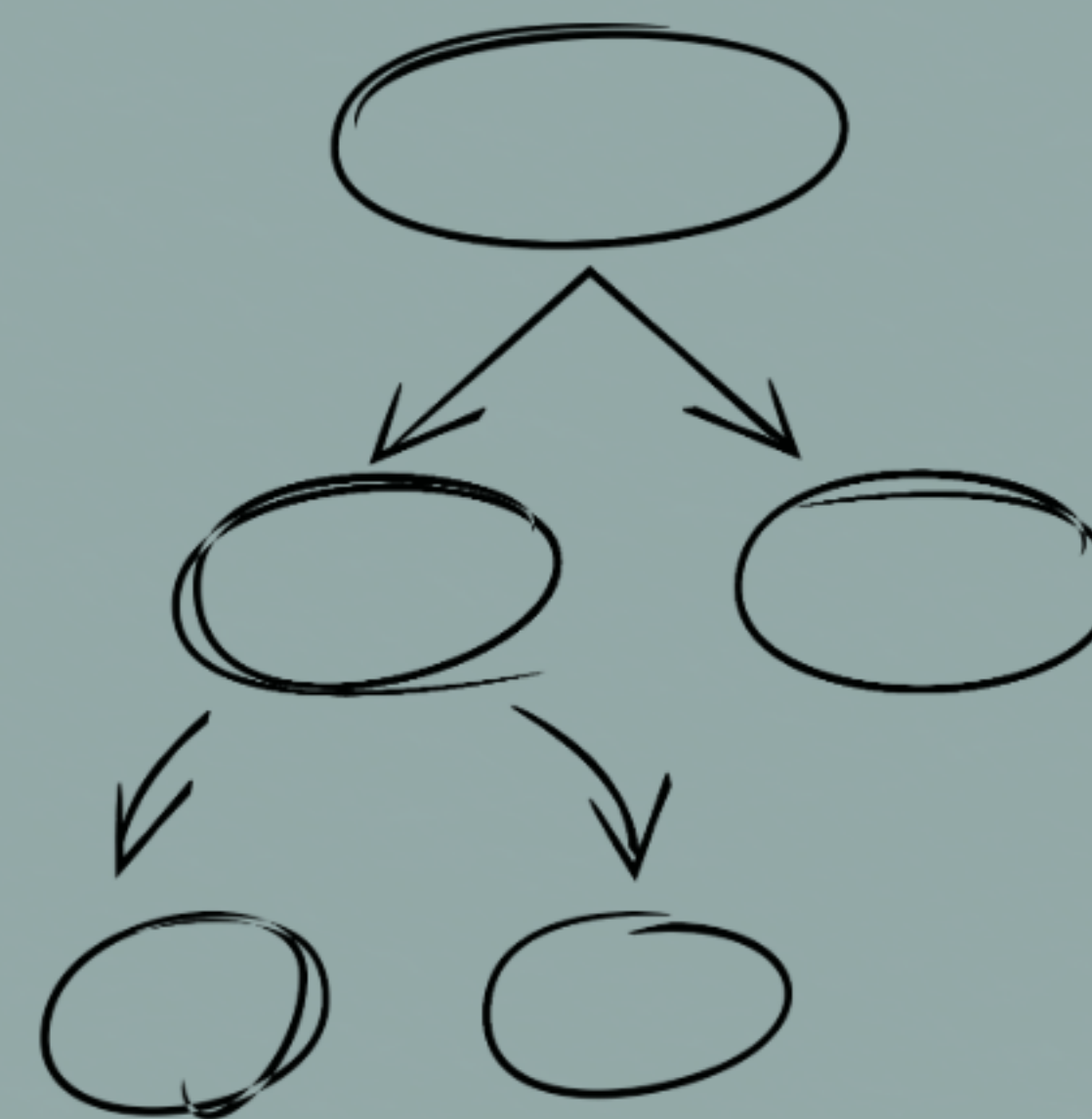
Prompt Card

**Doodle something
that makes you
feel good.**



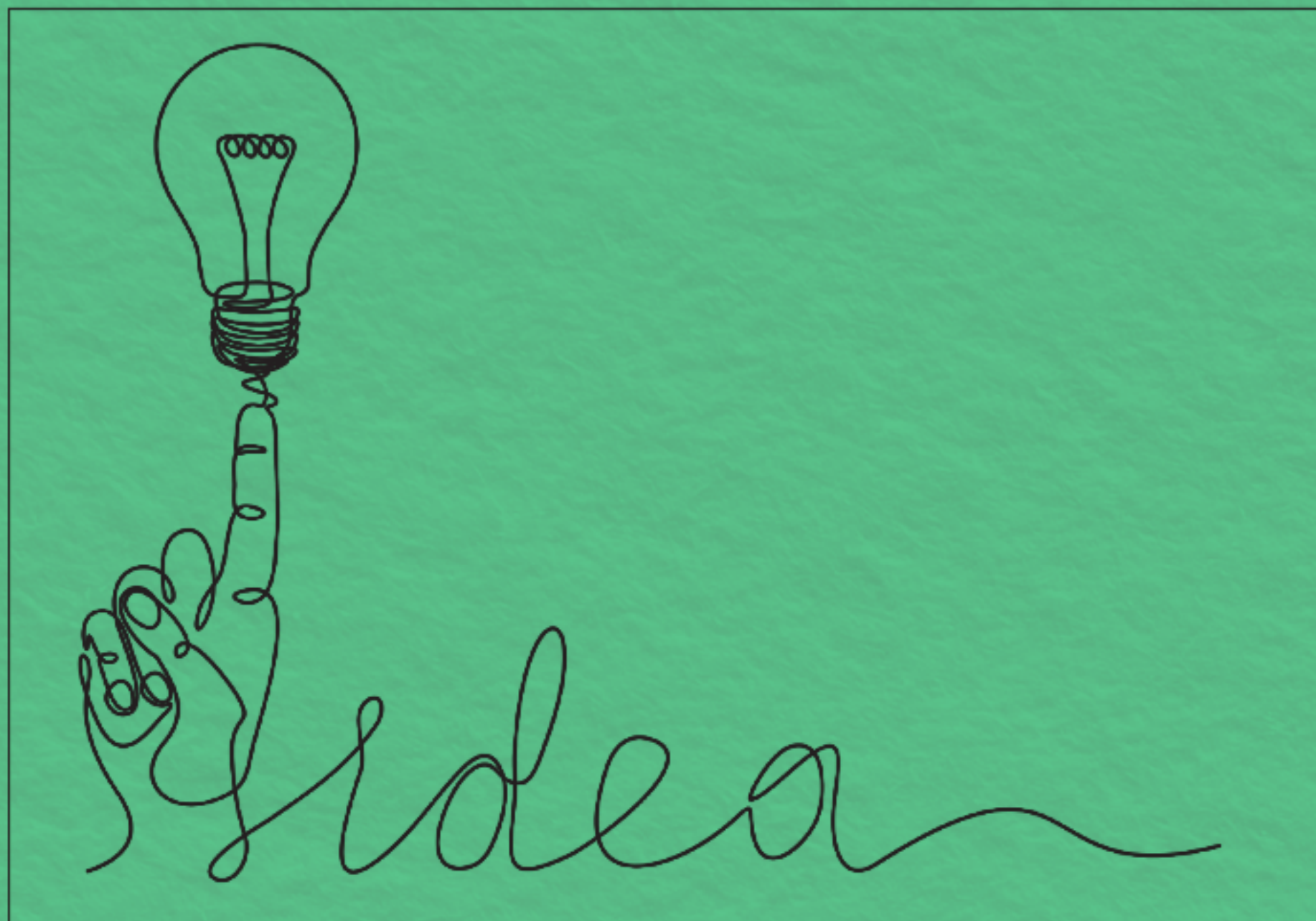
Prompt Card

**Map your journey
through the exhibition.
Note any moments you
stopped to look at the
artwork.**



Prompt Card

**Write an instruction for
the next person who
might use this
sketchbook.**



Prompt Card