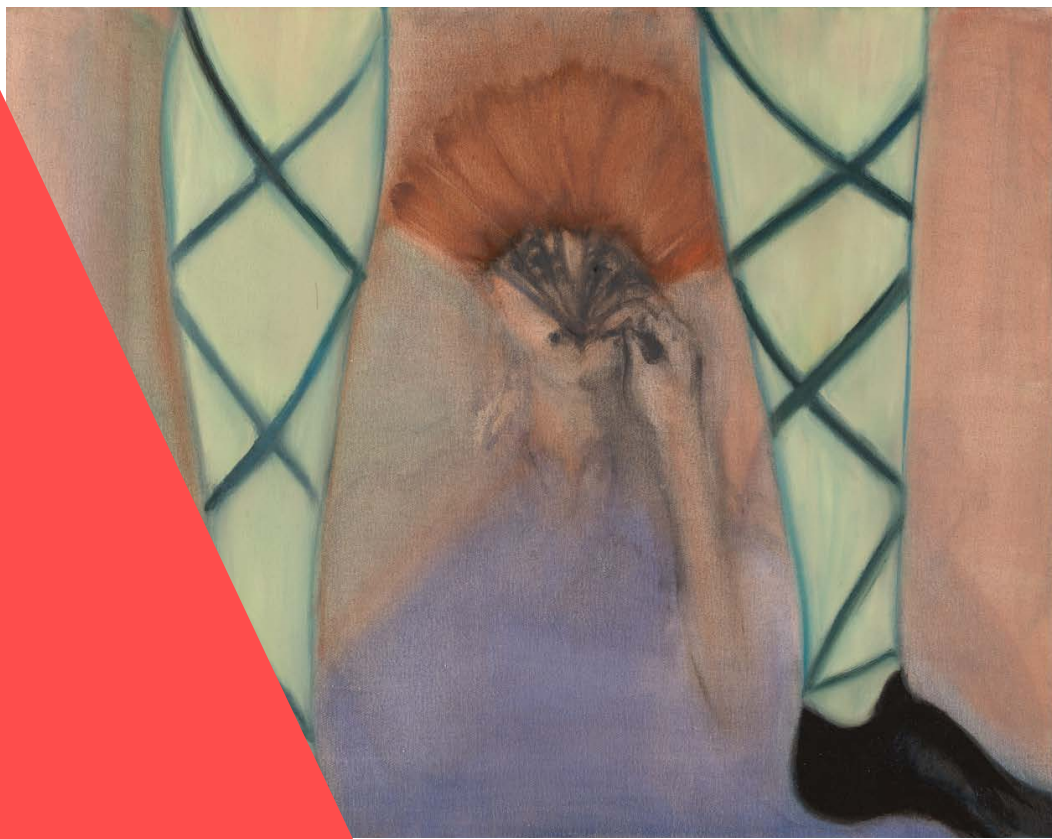


Nottingham Contemporary

Rosalind Nashashibi *Hooks*

**Easy
Read**



Contents

Page

Introduction

3

Hooks

4

Rosalind Nashashibi's Paintings


6

Rosalind Nashashibi's Films

8

For more information

9



Underlined
Words

In this Easy Read document, difficult words are underlined. We explain what these words mean in the sentence after they have been used.

Introduction



This exhibition is a display of artworks by an artist called Rosalind Nashashibi.



Rosalind lives in London.



We are showing artworks by Rosalind at Nottingham Contemporary from 11 February to 7 May 2023.

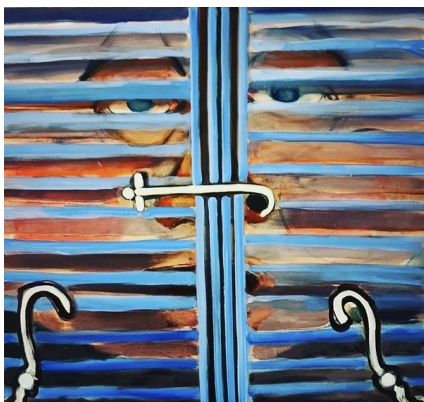
Hooks



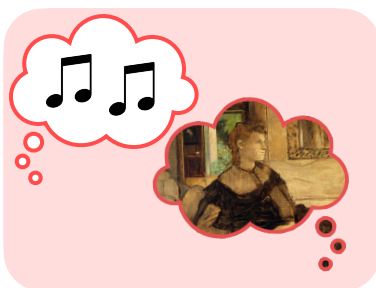
The title of the exhibition is Hooks.



The word hook can have more than one meaning. A hook can mean a way to close a window shutter or it can mean a repeating part of a song.



Some of Rosalind's paintings show images which are hidden by shuttered windows. Rosalind is interested in the meaning of a hook as a way to close and open shutters too.



Rosalind thinks it is interesting how the hook of a song can get stuck in your head. Rosalind has noticed that paintings and films also get stuck in her head.



Stuck in your head means when you can't stop thinking about something. This could be anything, including a person, a food or an animal. When a song is stuck in your head you can't stop singing it - this can be irritating!

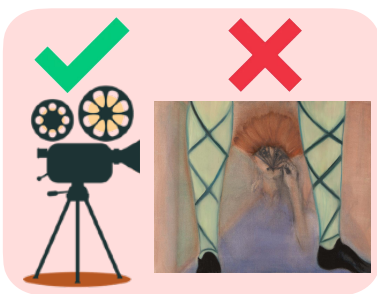


When Rosalind is making new works she often has repeating thoughts about other films and paintings and some of them get stuck in her head.

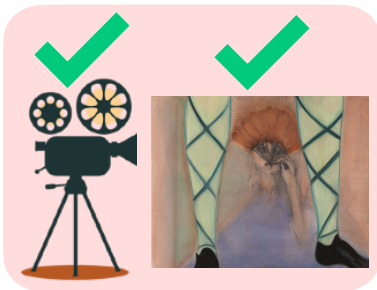
Rosalind Nashashibi's Paintings



Rosalind trained as a painter when she was at art school in Sheffield.



Rosalind stopped painting when she left art school. She chose to make films instead.



Since 2014, Rosalind has been making paintings as well as films.



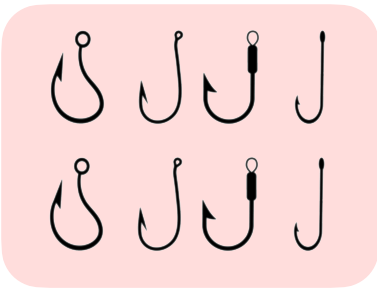
The paintings in this display are all new paintings which Rosalind made for this exhibition.



When Rosalind makes films she has to work with other people including actors and her family.



Rosalind says painting gives her space to work on her own.



Rosalind uses symbols or motifs in her paintings. These are images that represent bigger ideas. Sometimes Rosalind uses these images over and over again.

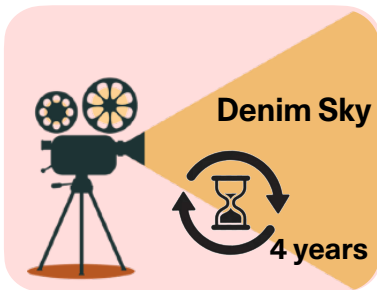


Rosalind is inspired by lots of other artworks, especially other paintings and films.

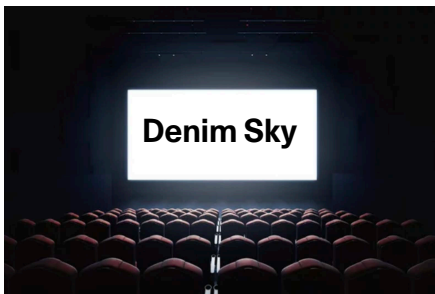
Rosalind Nashashibi's Films



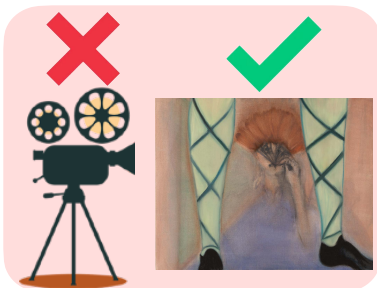
Rosalind is well-known for making films. She has been making films for over 20 years.



Last year Rosalind finished a new film called Denim Sky. This film took Rosalind four years to make.



Rosalind is planning to show this film in our cinema space downstairs during an event on Thursday 4th May 2023.



Rosalind isn't showing any films in the galleries at Nottingham Contemporary. Instead, Rosalind will be showing new paintings.

For more information



You can find out more about what we do by looking at our website here: nottinghamcontemporary.org



If you would like to help us show more artworks in the future, please think about giving us some money.



We suggest £3 as a good amount.



If you need more information please contact us by:

•Post:
Nottingham Contemporary, Weekday
Cross, Nottingham
NG1 2GB



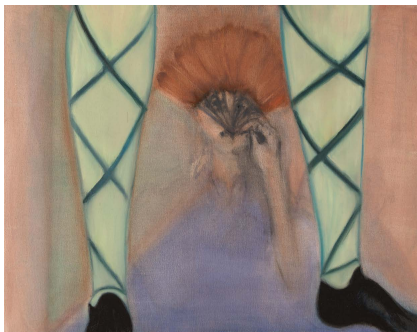
• phone: 0115 948 9750
• Email:
info@nottinghamcontemporary.org

Artwork Credits

Artwork credits tell us who made an artwork and when they made it. The artwork credits for the artworks you have seen in this easy read guide are shown below.



This is an artwork by Rosalind Nashashibi. The title of the artwork is Blue Shutters . This artwork was made in 2022. The artwork is a painting. It was made by painting with oil paints on canvas material.



This is an artwork by Rosalind Nashashibi. The title of the artwork is Phosphorous Malvolio. This artwork was made in 2020. The artwork is a painting. It was made by painting with oil paints on canvas material.