

CREATIVE PATH
TO ACCEPTANCE

A Loudspeaker Exhibition

July 2022

This exhibition presented the outcomes of creative explorations made by a group of women living in the East Midlands during May – July 2022.

The women explored the current exhibitions ‘The Place We Imagine’ and ‘Life on the CAPS’ at Nottingham Contemporary. We experimented with a range of materials and methods to make our own interpretations, including collaborating to make a film. We also visited a local community growing project at St Ann’s Allotments.

Together we discussed ideas about art, public and private space, relationships with the city and with nature, and cultural heritage.

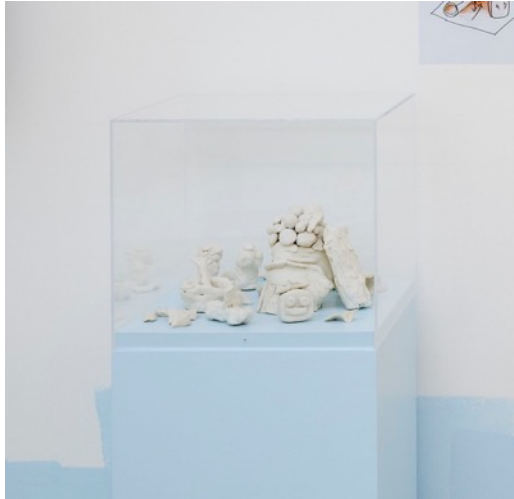


Loudspeaker sessions are an opportunity to take a break, develop routines, build confidence, become inspired and meet new people.

Women are offered a supportive, caring environment to help see things differently, feel positive about the future and move away from challenging circumstances.

Safe Spaces





Clay play sculpture model made by children at Robin Hood Primary School, working with artists from Assemble and Laura Eldret.

These sculptures were inspired by the clay model made by children to inform the design by Assemble of 'Fun House', one of the play sculptures in 'The Place We Imagine'.

We started by working in groups to turn lumps of clay into building materials for our sculptures: slabs, sausages and spheres.

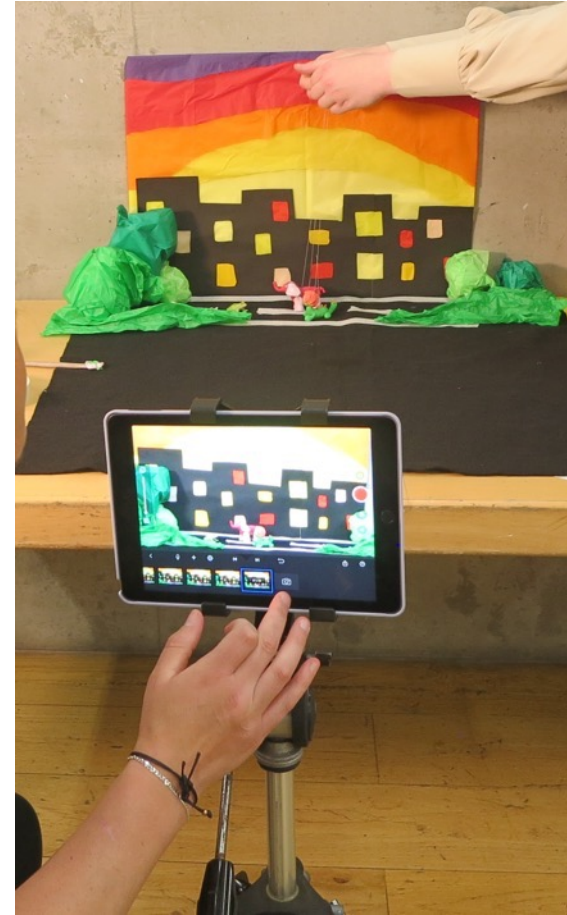
We then each spent three minutes working on the construction of our idea of a safe space, using these shapes. When three minutes was up, we passed our sculpture to the person on the left and then continued work on the sculpture passed to us from the right. It was our idea to work in this collective way.

Each sculpture was created by all 11 participants at the session that day.



'Fun House' 2022 play sculpture realised by Assemble artists, inspired by observations of children in three Nottingham primary schools.

Characters for Animation





'Still from '2 Lizards, Meriem Bennani.
Series of short animations for Instagram, 2020.

We watched some of Meriem Bennani's animations, '2 Lizards', that she made during lockdown and shared on Instagram.

We then made our own characters in plasticine to animate. Working in groups, we created backdrops for our characters so we could film them telling a story.

We filmed our characters using Stop Frame Studio, a free App that can be downloaded to phones or tablets. We had to take 12 pictures for every one second of film!

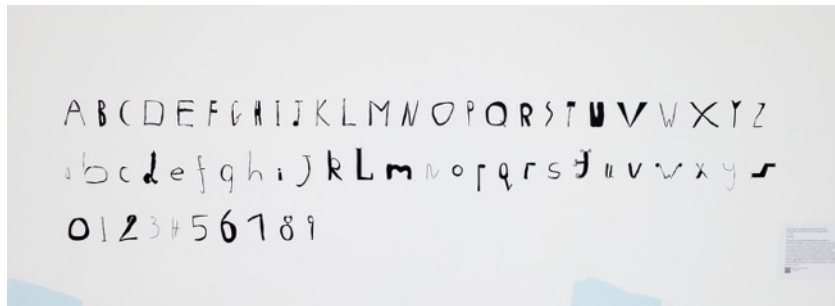
Our filmed animations are now part of our longer film 'Creative Path to Acceptance'.

Loudspeaker Font

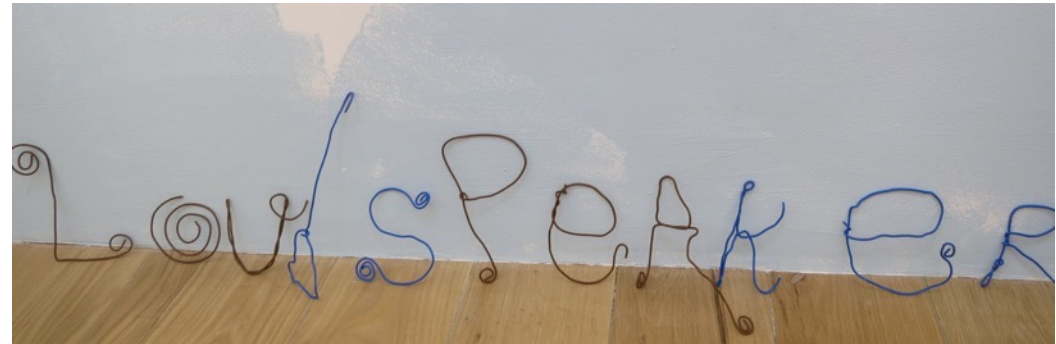


We looked at the font used in all the text in ‘The Place We Imagine’, designed by children originally as a new identity for their school library. We created giant letters in wire and card in the gallery that spelt out Loudspeaker.

Next we created our own Loudspeaker font by making individual letters out of a mixture of materials and then photographing them. This font is used for the title of our film and exhibition.



Us, 2021
Typeface
Laura Eldret, in collaboration with the
children of The Milford Academy and
Fraser Muggeridge



Public Spaces in the City





Lina Bo Bardi; Drawing of 'The Impossible Playground', 1968.
Ideas for play structures outside the Museum of Art, Sao Paulo,
Brazil.

We went for a walk from Nottingham Contemporary up to Lace Market Square.

While we were walking, we took photos of some of the buildings and public spaces. As well as taking still photographs we also used a film camera to shoot some film.

Back at the gallery, we each drew over a photo to transform the actual public space into one we would like to see.

This idea was inspired by Lina Bo Bardi's drawing 'The Impossible Playground', where she imagined a public space outside the Museo de Art de Sao Paulo as a play space, something that never happened. The exhibition 'The Place We Imagine' has play sculptures that the artists from Assemble have turned into reality from this drawing.

Nature and Sunlight





We visited a local community growing project at St Ann's Allotments.

In the Urban Nature area we collected leaves and flowers which we used to make cyanotype prints (a very simple form of photography without a camera).

We arranged the things we collected on special treated paper. We then exposed the paper to sunlight for ten minutes. When we washed them, white shapes remained where the leaves and flowers had been, and the rest of the paper was blue.

At the allotments we also planted some seeds to take home to grow.



Creative Path to Acceptance



We made a film (HD, 5 minutes), shot on three separate sessions; walking in the city, at St Ann's Allotments and of a conversation in a set created in the Nottingham Contemporary studio.

The edit was done collaboratively by the group to create a montage of the women talking about migration, heritage and acceptance, and the importance of sharing language and food in this. This is mixed with shots of the city and nature, reaffirming the importance of green spaces in challenging times.

There are little animated interludes with plasticine characters moving around colourful backdrops to add a bit of humour!

You can watch the film here: https://youtu.be/QXDm_j2594A

Shared Language

Intitt K oad

Aliree

Tipube m



We each hand wrote a word or phrase from our home language or dialect on a piece of felt. We then passed it to another member of the group who stitched it with colourful thread.

There are greeting words in Russian, Polish and local East Midlands English.

Thanks to Participants:

Aneeka, Asia, Beth, Clair, Jelena, Leah, Louise, Sam and Samantha

Peer Mentor, Emma

Associate Artist, Gillian Brent

Support Worker, Veronica O'Callaghan

Loudspeaker Programme Manager, Katy Culbard

The Loudspeaker programme is delivered by Nottingham Contemporary as part of the national Build Better Opportunities programme through the Opportunity and Change project, which is funded by the National Lottery Community Fund and the European Social Fund.

**Nottingham
Contemporary**

