

Nottingham Contemporary

Assemble + Schools of Tomorrow

The Place We Imagine



easy
read



Contents

Page

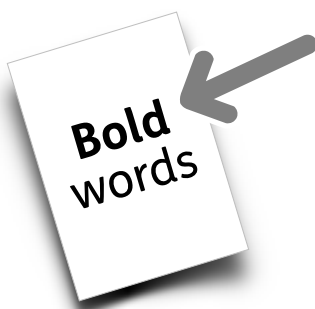
Introduction 3

What we wanted to do 4

What we did 6

What they made 7

For more information 8



In this Easy Read document, difficult words are in **bold**. We explain what these words mean in the sentence after they have been used.



Some words are [blue and underlined](#). These are links which will go to another website which has more information.

Introduction

The Place We Imagine is a collection of artworks by:



- A group of artists called Assemble.



- Children from schools across Nottingham.



The artworks are ideas for playgrounds that the artists and children made together.



We are showing them at Nottingham Contemporary from 7 May until 4 September.

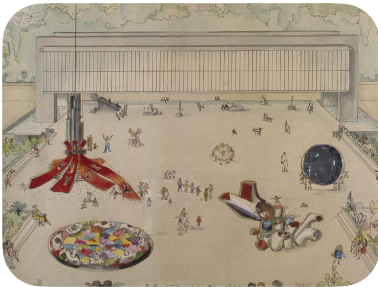
What we wanted to do



Assemble came up with The Place We Imagine by looking at drawings by an **architect** called Lina Bo Bardi.



An **architect** is a person who designs buildings.



In 1968, Lina Bo Bardi drew ideas for a huge playground in Brazil.



Assemble thought about Lina Bo Bardi's ideas.

Together, we thought about:



- Whether we could think of new ideas for playgrounds.



- Whether children could design their own playgrounds.



- Whether we could design art galleries and schools in a different way.

What we did



For the last 3 years, artists from Assemble have worked with children from our Schools of Tomorrow scheme.



Schools of Tomorrow is where artists work in schools for a long time to support teachers and children to think more about art.



The artists listened to the children's ideas to help them design a new playground.

What they made



In the art galleries there are 3 large play **sculptures**.

Sculptures are pieces of art that are objects, rather than paintings, films or photos.

The sculptures are called 'Big Red', 'Menagerie' and 'Fun House'.



'Big Red' and 'Menagerie' were based on Lina Bo Bardi's drawings.



'Fun House' was made by working with children.

For more information



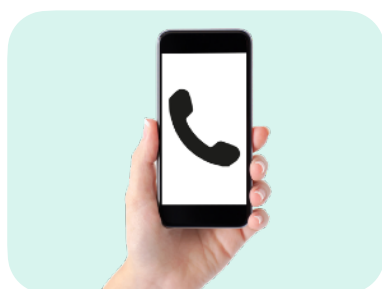
You can find out more about what we do by looking at our website here: nottinghamcontemporary.org



If you would like to help us show more artworks in the future, please think about giving us some money.



We suggest £3 as a good amount.



If you need more information please contact us by:

- Email:
info@nottinghamcontemporary.org



- Phone:
0115 948 9750